



AccuFill Brake Fill

The AccuFill Brake Fill System is a full featured, PLC controlled system capable of performing high speed, ABS or standard brake system test and filling on automobile, truck, construction equipment, farm equipment, even motorcycle assembly lines.

These systems can perform a nitrogen pressure test, evacuation, vacuum test, pressure fill and level adjust, delivering a high quality, dependable brake fill. ABS systems are modulated and fill volumes are flow meter verified to ensure correct processing.

Our brake fill systems utilize S/S piping and valves, two stage or dry scroll vacuum pumps and heated storage tanks for dehydration, scavenge pumps with traps, dripless, auto-clamp tooling, and an ABS Control Interface Module, if required. These systems can be configured as stop stations, mobile stations, or track mounted with VFD motors on multiple carriers.

AccuFill Brake Fill systems have been proving themselves on automobile, truck, motorcycle, construction vehicle and farm equipment assembly lines for many years.



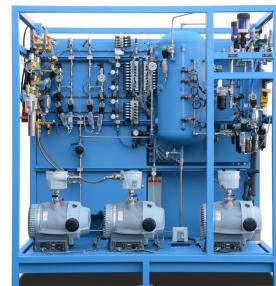
Single Port, Dripless, Auto Clamping and Sealing Fill Tool



Dual Port, Dripless, Auto Clamping and Sealing Fill Tool



Manual Clamp, Dripless, Internal Sealing Fill Tool



Rear View showing dry scroll vacuum pumps, S/S piping, dehydration and storage tanks



AccuFill Brake Fill Overhead Carrier with Tool Positioning Arm

Product Detail

STANDARD FEATURES:

- Allen Bradley PLC control
- Allen Bradley Panelview Touchscreen Operator Interface
- Automated process set-up, initiation, cycle completion, and return to standby
- NFPA 70E Arc Flash compliant
- Stainless steel valves and piping
- Dedicated fluid dehydration vacuum pump
- Pressure fill with volume verification
- ABS modulation during evacuation and fill
- Dedicated brake system evacuation pump
- Dripless, external and internal sealing, autoclamp fill tooling
- Evacuation, vacuum test, pressure fill, and level adjust fill sequence
- Dedicated scavenge pumps with traps
- Installation, Operation, Maintenance, and Troubleshooting Manual

OPTIONS AVAILABLE:

- Allen Bradley CompacLogix, ControlLogix, Flex I/O
- Mitsubishi, Omron, Toyopuc or other PLC options
- Panelview, GOT, or other Touchscreen Operator Interface options
- N₂ pressure test option prior to evacuation test and fill
- Pressure or volume fill
- Vane or dry scroll vacuum pumps
- Single or dual port reservoir test and fill

CONFIGURATION OPTIONS:

- Stop station
- Mobile station
- Base station with track mounted, vehicle towed tool console
- Base station with motorized, VFD, line synchronized, track mounted tool console

CONFIGURATION OPTIONS:

- Nitrogen Pressure Test
 - Initial pressure test and pressure decay test used to find large leak failures
- Pressure or volume fill
- Reservoir level adjust
- ABS modulation

TOOL PRESENTATION OPTIONS:

- Simple track mounted tool balancer
- Swinging boom and tool balancer
- Automatic, air actuated drop and retract balancers
- Multi-axis, automatic tool positioning
- Multi tool, automatic tool positioning

Serv-I-Quip, Inc.

127 Wallace Avenue. Downingtown PA, 19335

Web www.siqinc.com • Phone (610) 873-7010 • Fax (610) 873-7151