



## DataFill Multi Fluid Fill

MultiFill Systems combine multiple fluid fills at a single process station. This can be the most efficient method to address end of line processing, or manage multiple fluid variations and mixed assembly lines. These systems can accommodate:

- Multiple Engine Oil Types
- Multiple Transmission Fluid Types
- Multiple Coolant Mixtures
- Multiple Fluids – Coolant, Brake, Power Steering, Engine Oil, Transmission, Clutch, Diesel and Wiper Fluid
- Mixed Production with multiple tank port locations (left and right side)

These systems utilize individual fluid supply, prep, and storage, along with individual system test, fluid fill and level adjust processes. Serv-I-Quip's expertise in fluid prep, fluid measurement, and tooling design results in a high quality, efficient, and cost effective system.

DataServ 3.0 is a critical component in the fluid selection, process setup, and test and fill data retention process vital to efficiently operating a multi fluid fill system. This software offers the traceability, quality assurance, process control, and access to production data that manufacturing engineers require from a multi fluid test and fill system. New features of DataServ 3.0 include a Dashboard that can display multiple DataServ systems, key production values, production analysis reports, process alerts, notifications, and system events.

## Product Detail

### STANDARD FEATURES:

- DataServ 3.0 web based data acquisition and process control software
- Automatic process set-up, initiation, cycle completion, and return to standby
- Hand held CCD or RF bar code scanner
- Allen Bradley PLC machine control integrated with PC Operator Interface
- Dell PC running Windows®, 20" flat screen LCD
- Backup Allen Bradley Panelview® Touchscreen Operator Interface
- NFPA 70E Arc Flash compliant
- Auto clamp/unclamp pneumatic tooling
- Operator start/stop pendant mounted at tool
- Up to 8 unique fluid fills and tools
- Pressure and volume fill
- Pressure decay and vacuum leak test processes
- Individual fluid supply pumps and storage tanks
- Individual vacuum pumps for system prep and leak testing
- Individual scavenge pumps with liquid trap for pressure relief and level adjust
- Individual stainless steel flow meters verify density and fill amounts
- 2 gpm to 6 gpm fill rates

- Backup, manual hose reels available
- 65 or 100 cfm single stage vacuum pumps with auto purging traps
- Individual scavenge lines isolate multiple fluids
- Dripless tooling

### CONFIGURATION OPTIONS:

- Stop station
- Mobile station
- Base station with track mounted, vehicle towed tool console
- Base station with motorized, VFD, line synchronized, track mounted tool console
- With and without dehydration, storage, and heated supply

### PROCESS CYCLE OPTIONS:

- Pressure or volume fill
- Standard cycle includes:
  - Tool hookup
  - Evacuate
  - Vacuum test
  - Fluid fill
  - Pressure relief, level adjust, scavenge, and tool disconnect

### TOOL PRESENTATION OPTIONS:

- Simple track mounted tool balancer
- Swinging boom and tool balancer
- Automatic, air actuated drop and retract balancers
- Multi-axis, automatic tool positioning
- Multi tool, automatic tool positioning

## Serv-I-Quip, Inc.

127 Wallace Avenue. Downingtown PA, 19335

Web [www.siqinc.com](http://www.siqinc.com) • Phone (610) 873-7010 • Fax (610) 873-7151





## DataFill Multi Fluid Fill (continued)



DataFill MultiFill Stop Station for Coolant, PS, Brake, Trans, and Engine Oil



DataFill MultiFill System for Coolant, Diesel and Wiper Fluids



DataFill MultiFill System for Transmission, Diesel Fuel, Engine Oil, Coolant and Axle



Transmission and Engine Oil Fill Tools with cycle start/stop switches and auto drop/retract

### TYPICAL DATA DISPLAYED AND RECORDED:

#### Process Screen

- Product ID#
- Operator ID#
- Base ID#
- Time/Date
- Unit Vacuum Level
- Vacuum Check Level
- Pressure Level
- Pressure Time
- Volume Filled
- Level Adjust Time
- Fluid Scavange Time
- Total Cycle Time
- Pass / Fail Code
- Fluid Type
- Total Fluid Usage

#### Set Up Screen

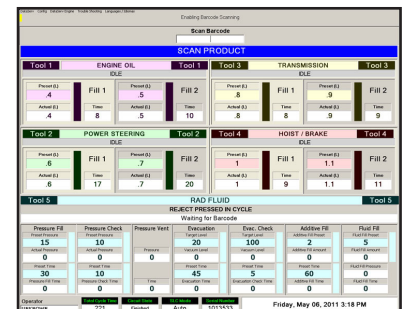
- Set model #
- Set Model Description
- Rev. #
- Set author
- Set Pressure Level
- Set Pressure Time
- Set Vacuum Level
- Set Vacuum Time
- Set Fluid Type
- Set Vacuum Reject Time
- Set Vacuum Reject Level
- Set Fluid Volume
- Set Max Cycle Time

#### Fault Screen

- Low Air Pressure (Inlet)
- Low Fluid Pressure (Inlet)
- Pressure reject
- Vacuum Reject
- Volume Reject
- Pressure Fill Reject
- Cycle Aborted
- Cycle Overtime

#### Calibration Screen

- Set Calibration Volume
- Set Comments
- Set Fluid Type
- Set Fluid Pressure
- Set Password
- Calibration History



DataFill Multi Fluid Fill Screenshots

### Serv-I-Quip, Inc.

127 Wallace Avenue. Downingtown PA, 19335  
Web [www.siqinc.com](http://www.siqinc.com) • Phone (610) 873-7010 • Fax (610) 873-7151