

DataFill Power Steering & Clutch Fill

The DataFill Power Steering Fill and Clutch Fill Systems perform a PLC controlled and PC managed quality check and fill on closed loop oil filled systems. This process usually includes:

- Oil Prep
- System Evacuation and Vacuum Testing
- Pressure Fill
- Level Adjust Fluid Reservoir

Serv-I-Quip's thorough oil preparation process, evacuation expertise, and tooling design skill results in a high quality, repeatable process.

DataServ 3.0 has become a critical component in the measurement, documentation and implementation of improvement processes vital to your factory quality control system. Our DataServ software offers the traceability, quality assurance, process control, and access to production data that manufacturing engineers now require as part of their fluid filling operations.

New features of DataServ 3.0 include a Dashboard that can display multiple DataServ systems, key production values, production analysis reports, process alerts, notifications, and system events.

These systems are available as fluid prep and supply, pressure or volume fill, and equipped with high capacity vacuum pumps and auto purging traps, dedicated scavenge lines, and custom, dripless tooling.

Product Detail

STANDARD FEATURES:

- Web based data acquisition and process control software
- Automatic process set-up, initiation, cycle completion, and return to standby
- Hand held CCD or RF bar code scanner
- Allen Bradley PLC machine control integrated with PC Operator Interface
- Dell PC running Windows®, 20" flat screen LCD
- Back-up Allen Bradley Panelview® Touch screen Operator Interface.
- Auto clamp/unclamp pneumatic tooling
- Pressure or volume fill
- Stainless steel flow meter verifies fill amount
- Evacuation and vacuum leak test
- Standard or custom neck styles and port openings
- Continuous recirculation of fluid for dehydration
- Dedicated vacuum pumps for oil dehydration and system evacuation
- Scavenge pump vents fluid pressure, adjusts level, and eliminates tool dripping
- Single stage vacuum pumps with auto purging traps
- Automatic reservoir level adjust
- Dripless tooling

CONFIGURATION OPTIONS:

- Stop station
- Mobile station
- Base station with track mounted, vehicle towed tool console
- Base station with motorized, VFD, line synchronized, track mounted tool console
- With and without dehydration, storage, and heated supply

PROCESS CYCLE OPTIONS:

- Pressure or volume fill
- Standard cycle includes:
 - Tool hookup
 - Evacuate
 - Vacuum test
 - Oil fill
 - Pressure relief, level adjust, scavenge, and tool disconnect

TOOL PRESENTATION OPTIONS:

- Simple track mounted tool balancer
- Swinging boom and tool balancer
- Automatic, air actuated drop and retract balancers
- Multi-axis, automatic tool positioning
- Multi tool, automatic tool positioning
- Start/stop/reset push button mounted at tool

Serv-I-Quip, Inc.

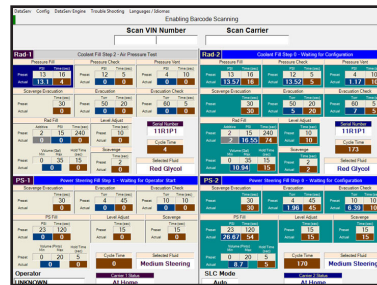
127 Wallace Avenue. Downingtown PA, 19335
 Web www.siqinc.com • Phone (610) 873-7010 • Fax (610) 873-7151



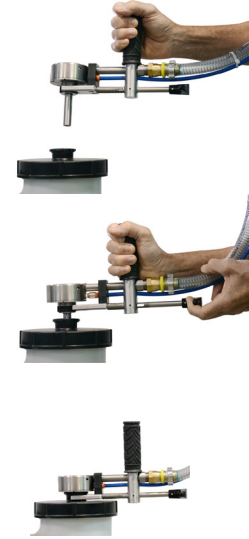
DataFill Power Steering & Clutch Fill (continued)



DataFill Power Steering Prep and Fill System



DataFill Power Steering & Rad Fill Operator Screen



Manual clamp, internal sealing, PS Fill tool

TYPICAL DATA DISPLAYED AND RECORDED:

Process Screen

- Product ID#
- Operator ID#
- Base ID#
- Time/Date
- Unit Vacuum Level
- Vacuum Check Level
- Pressure Level
- Pressure Time
- Volume Filled
- Level Adjust Time
- Fluid Scavange Time
- Total Cycle Time
- Pass / Fail Code
- Fluid Type
- Total Fluid Usage

Set Up Screen

- Set model #
- Set Model Description
- Rev. #
- Set author
- Set Pressure Level
- Set Pressure Time
- Set Vacuum Level
- Set Vacuum Time
- Set Fluid Type
- Set Vacuum Reject Time
- Set Vacuum Reject Level
- Set Fluid Volume
- Set Max Cycle Time

Fault Screen

- Low Air Pressure (Inlet)
- Low Fluid Pressure (Inlet)
- Pressure reject
- Vacuum Reject
- Volume Fill Reject
- Pressure Fill Reject
- Cycle Aborted
- Cycle Overtime

Calibration Screen

- Set Calibration Volume
- Set Comments
- Set Fluid Type
- Set Fluid Pressure
- Set Password
- Calibration History

Serv-I-Quip, Inc.

127 Wallace Avenue. Downingtown PA, 19335
 Web www.siqinc.com • Phone (610) 873-7010 • Fax (610) 873-7151